

ALAN BEDDING XL AUTOMATIC (general view)

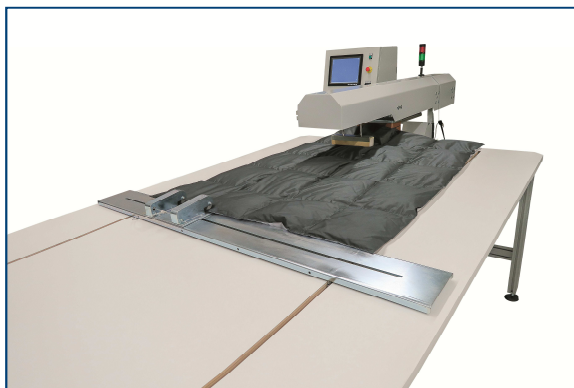
ALAN BEDDING XL AUTOMATIC

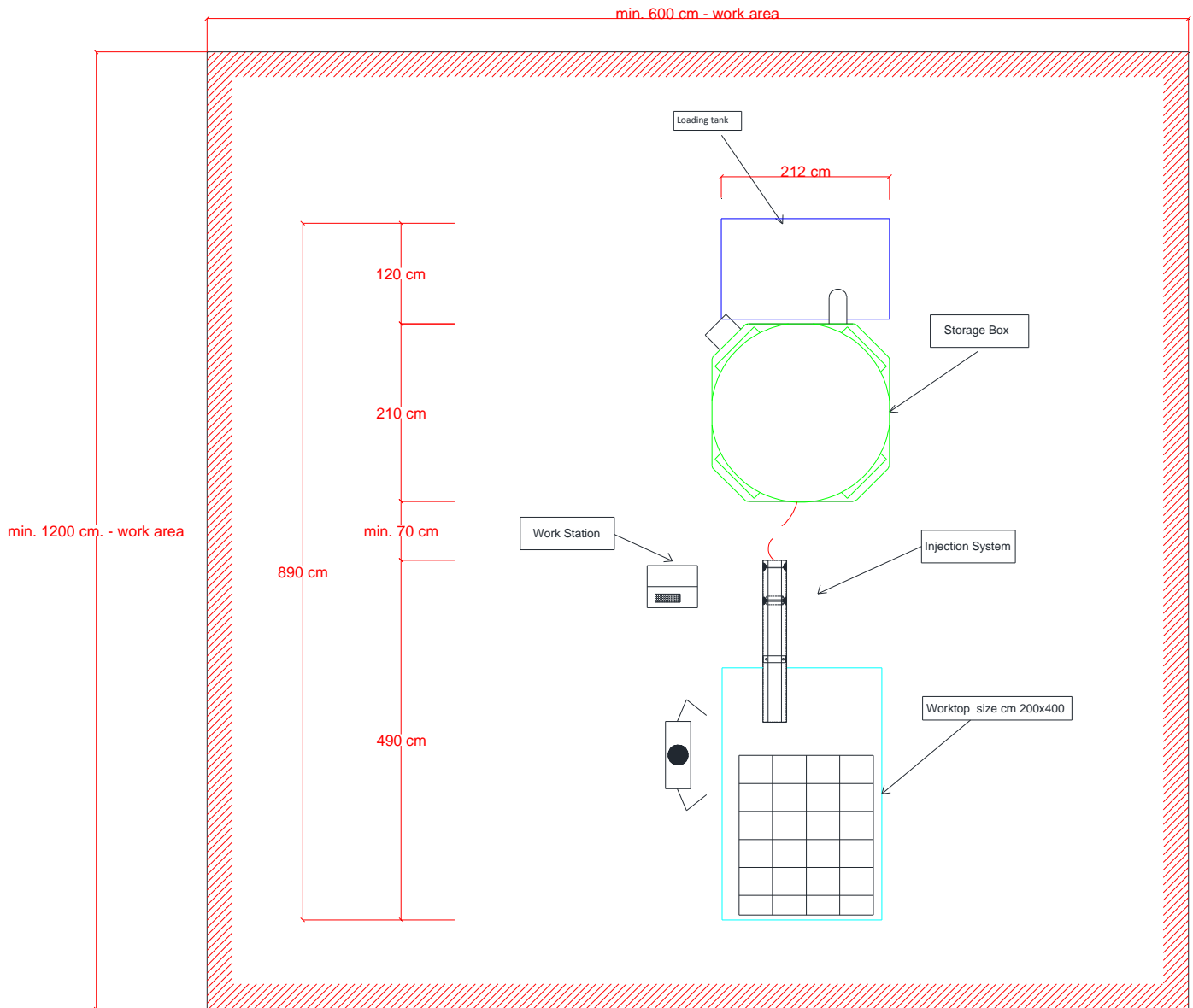
Four-scale automatic machine with air injection system for forced filling of bed duvets. The amount of required feathers/down is accurately weighted out by the unit scales.

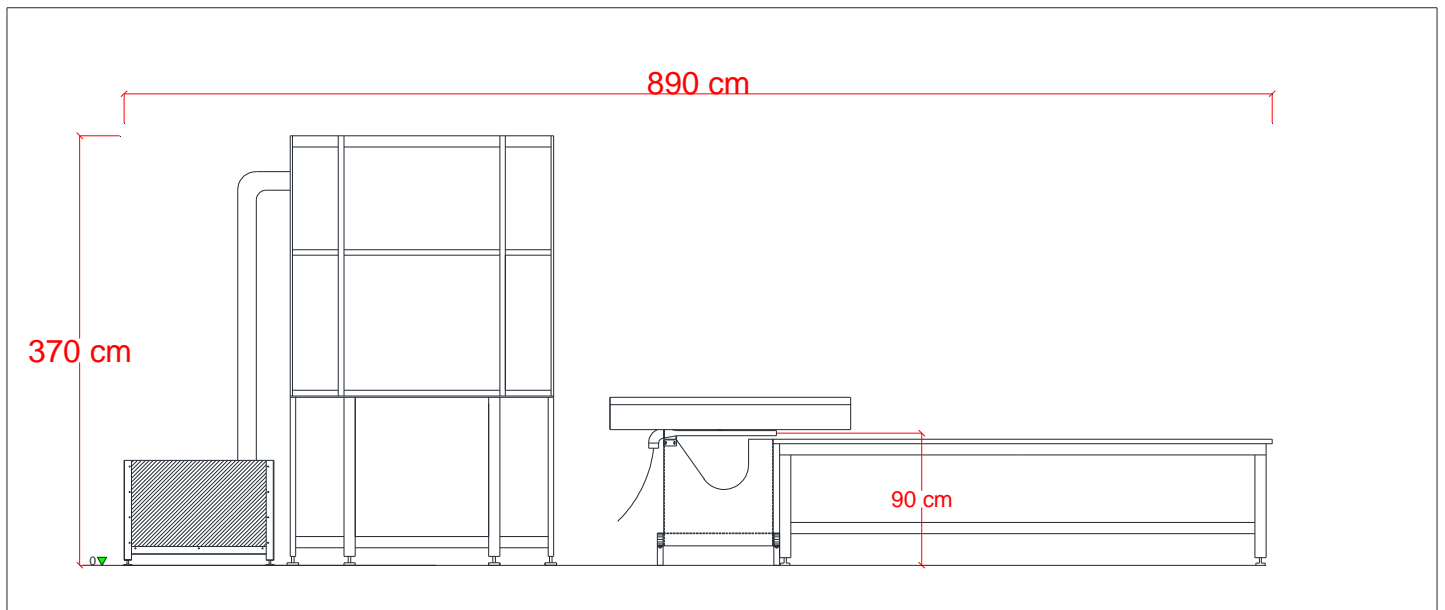
ALAN BEDDING XL is a machine designed specifically to fill bed duvets with feathers. This machine has an injection system made of two parallel lances for filling two chambers simultaneously.

The lance system is modular: the basic version machine is composed by one modular with double lance and it could be integrated with more modules to get a injection e system with 4, 6 and 8 lances.

The plant can be equipped with an automatic table for moving the bed comforters between one filling and the other. This allows implementing a fully automated filling system.





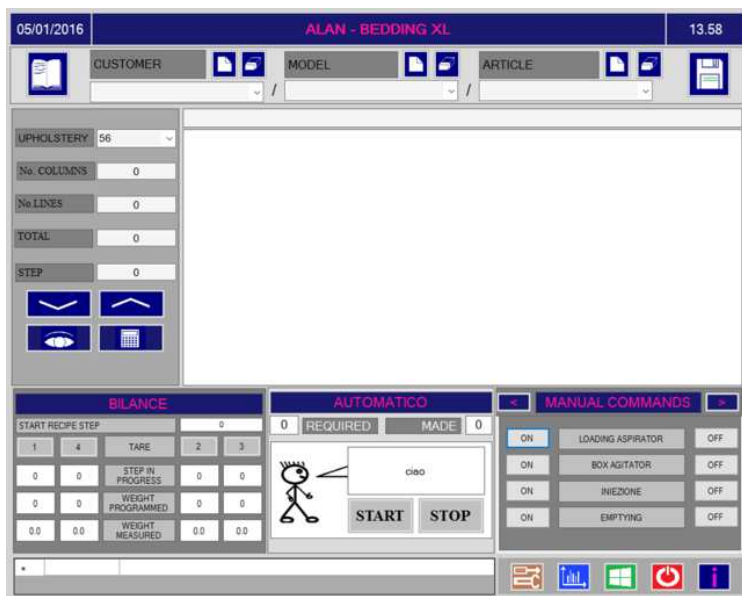


<i>Description</i>	<i>Abb.</i>	<i>Size</i>
Minimum length of installation area	Min. Le	12000 mm
Minimum width of installation area	Min. Wi	6000 mm
Minimum height of installation area	Min. H	4000 mm
Machine Length	Le	8900 mm
Machine Width	Wi	2120 mm
Machine Height	H	3700 mm
Worktop Height	H worktop	900÷1000 mm



PARTS DESCRIPTION

WORKSTATION (Main Page)



FILLING CYCLE SETTING (I.E. "RECIPE")

The cycle of weightings, the Recipe, is set directly from the workstation graphic interface. The Recipe is the sequence of fillings that the machine will run automatically. The Recipe will be named according to a specific outline, that is, the Customer, the Model and the Article. Once nominated these three parameters, we will proceed to compose the individual fillings defining the sequence and the amount of feather. To define the parties will also use a graphical viewer (see box on the Left of the Workstation) that allow to have a schematic representation of the Recipe.



LOADING TALK

The feather will be deposited in the loading tank and then it will be sent to the storage box.



CRANE (Optional)

The crane is used for handling bags of feather and to download them into the loading tank.

Technical data:

- manual handling crane arm
- Height: 3,8 m
- Length of arm: 2,5 m
- Maximun payload: 125 Kg



CABIN (Optional)

The cabin has a dual function: the first is to discharge the feathers from the storage box, the second is to suck the feather from the worktop tank.

The Cabin is equipped with a feather recovering sack.



Model	ALAN BEDDING XL AUTOMATIC
Description	Four-scale automatic machine with air injection system for forced filling of bed duvets. The amount of required feathers/down is accurately weighted out by the unit scales.
Fillings	from Min. 5 g to Max. 100 g
Productivity	600* fillings per hours (about 25 comforters per hour, comforters 6x4)
Storage box capacity	6,8 m³
Scales	4
Injection System	By air
Lances	The machine is equipped with a double lance. The lance size could be customized.
Accessories	<ul style="list-style-type: none"> • Double-Lance • Assistance Remote System Kit (by internet) for after-sales support • Loading Tank • Automatic worktop
Optional	<ul style="list-style-type: none"> • Cabin • Crane • SCP-115 Production control system
Certification	CE declaration of conformity

(*) Hourly productivity may vary significantly due to several factors: amount of the down per filling, tolerance required in the amount of down for a single fill, the type of product used for filling and environmental conditions (i.e. humidity and electrostatic current). The productivity indicated in the tables has been determined with a filling of 20 g.

Electric energy	
Energy voltage of electrical equipment	3/N/PE/400 VAC +/- 10%
Supply voltage	50 Hz
Energy voltage of auxiliary circuits	24 VDC +/- 10%

Electric energy consumption	
Power	6,3 kW – 22A

Compressed air	
Operating Pressure	0,6 MPa (6 bar)

Compressed air consumption	
consumption	600 L/min



..The manufacturer reserves the right to change technical data without notice.