

Specifications/

S-7300B-
S-7300B-
P

Additional functions		Lubrication type	Application	Specification
6	Thread holder device	0 Minimum lubrication	3 Medium Heavy materials	P Premier Specification
9	Thread holder device Digital foot lifter	3 Semi dry	5 Heavy materials	

S-7300B	-933P	-903P	-905P	-933	-903	-905
	-633P	-603P	-605P		-603	-605
	Premier Spec			Standard Spec		
Lubrication type	Semi-dry	Minimum Lubrication		Semi-dry	Minimum Lubrication	
Application	Medium Heavy materials		Heavy materials	Medium Heavy materials		Heavy materials
Max sewing speed	5,000sti/min		4,500sti/min	5,000sti/min		4,500sti/min
Max. stitch length	5mm		Max7mm (5mm standard)	5mm		Max7mm (5mm standard)
Feeding system	DIGI FLEX FEED (Direct Feed Dog Drive System)					
Pressure foot lifting	-9xxSpec:Digital Foot Lifter -6xxSpec:Analog Foot Lifter					
Pressure foot height	13mm					
Trimming mechanism	Double action trimming mechanism			Single action trimming mechanism(Ordinary type)		
Needle (DBx1,DPx5)	#11-#18 (Nm75-110)		#19-#22 (Nm120-140)	#11-#18 (Nm75-110)		#19-#22 (Nm120-140)
Needle bar stroke	31mm		35mm	31mm		35mm
Height of feed dog	0.8mm		1.2mm	0.8mm		1.2mm
Operation space	310mm (needle to machine arm)					
Weight	-9xxSpec:39.5kg -6xxSpec:38.0kg					
Motor	AC servo motor					
Power	Single-phase:200-240V, 100-110V(*1) 420VA					

*1 The transformer is required.

Option/

- THREAD WIPER DEVICE SET <SD0636001>
- X-OVER SEAM SENSOR SET <SD0637001>



Matériel industriel & Fournitures pour le Textile & le Cuir
2 avenue de La Tessoualle - BP71212
49312 CHOLET CEDEX FRANCE

Accueil 02 41 65 85 32 / contact@maugin-sas.com
Pièces détachées 02 41 65 08 08 / www.maugin-parts.com

Brother GT/ISM Support App



RoHS Compliant S-7300B is compliant with the RoHS Directive (the restriction of the use of certain hazardous substances in electrical and electronic equipment) which came into effect in the EU in July 2006.

Please read instruction manual before using the machine for safety operation.
-Product specifications are subject to change for improvement without notice.
-Photographs are for illustration purpose. They may not represent actual operating conditions and may display optional parts.

CHINA	BROTHER MACHINERY SHANGHAI LTD.	https://www.brother.cn/	+86-21-3135-3355
ASIA	BROTHER MACHINERY (ASIA) LTD.	https://www.brother.com.hk/	+852-2777-0010
EUROPE	BROTHER INTERNATIONALE INDUSTRIEMASCHINEN GmbH	https://www.brother-ism.com/	+49-2822-6090
AFRICA, MIDDLE EAST			
AMERICAS	BROTHER INTERNATIONAL CORPORATION	https://www.brother-usa.com/	+1-908-704-1700



BROTHER INDUSTRIES, LTD.
1-5, Kitajizoyama, Noda-cho, Kariya-shi, Aichi 448-0803, Japan.
Phone: 81-566-95-0088 Fax: 81-566-25-3721 https://industrialsewingmachine.global.brother/

2025.04 I5042046Z Vol.1



brother
at your side

NEXIO

Single Needle Direct Drive Lock Stitcher
with Electronic Feeding System and Thread Trimmer
S-7300B



Bring your factory to the next level with Brother high end model

Brother's industrial sewing machines are the highest quality products created through [Outstanding Design Technology], [Reliable Manufacturing Technology], and [Strict Quality Control].

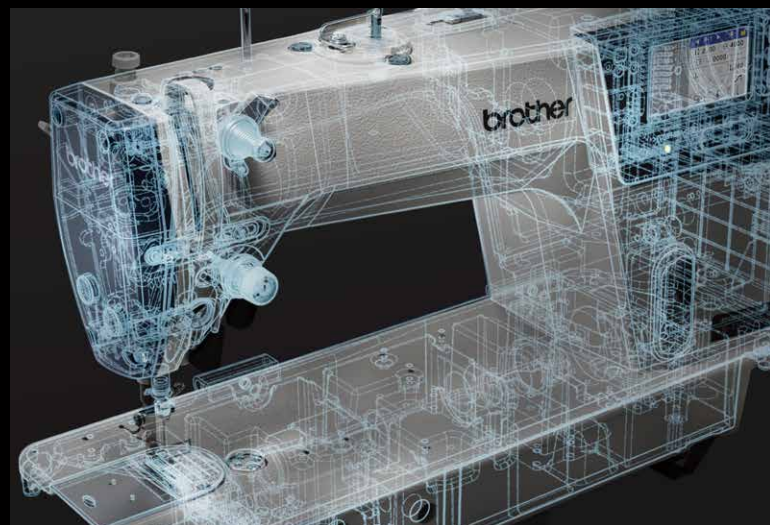
High durability sewing machine stand up to long-term use, improve productivity, and minimize energy consumption with an environmentally friendly design. Improve the efficiency and quality of the entire factory and take your factory to the next level.



Quality Control



Manufacturing Technology



Design Technology



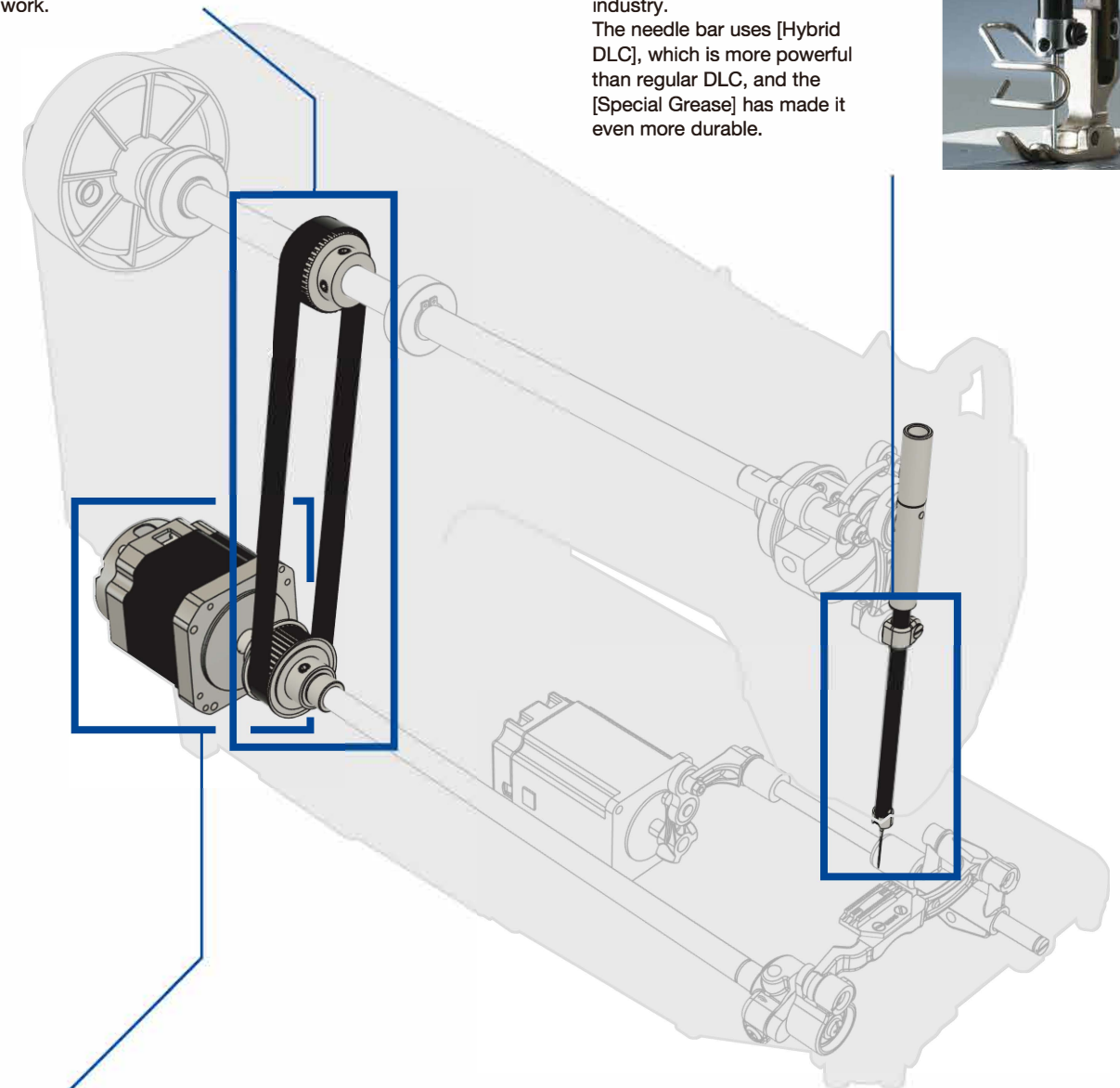
Comfortable Workability

Less Sound/Low Vibration

By optimizing the mechanism using our unique analysis technology and adopting a belt drive system, achieved low noise and low vibration. This reduces stress on the operator and allows for comfortable sewing work.

Clean Sewing, Prevents fabric stains (Semi Dry Spec)

Brother's unique dry technology has made this the first maintenance-free machine in the industry. The needle bar uses [Hybrid DLC], which is more powerful than regular DLC, and the [Special Grease] has made it even more durable.

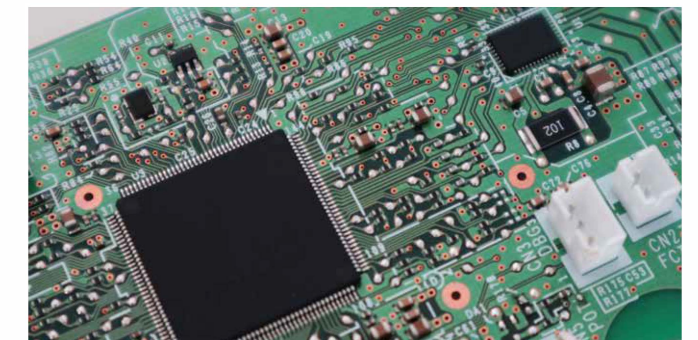


Energy Saving

Motors and electrical components are designed by Brother, suitable for sewing machines. This achieves [low power consumption] and support the needs for environmental friendliness.

Reliable Electrical Equipment

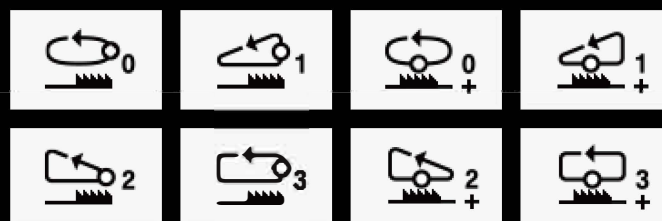
Brother utilizes its advanced technical capabilities as a "conglomerate company" to provide highly reliable electrical equipment for not only sewing machines but also printers and machine tools and others. This improves the durability and stability of the products. The high reliability that Brother's technical capabilities bring has been highly praised by many customers.



※This image is for illustrative purposes only.

DIGIFLEX FEED2.0

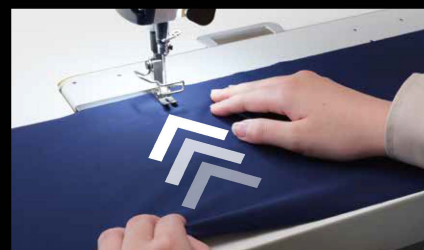
Upgraded Brother's world-only electronic feed technology [DIGIFLEX FEED]
Less Stressful for the operator and easy to use, achieves high sewing quality.



[DIGIFLEX FEED 2.0] newly installed in the S-7300B realizes 8 types of feed control, allowing more detailed settings according to the fabric and the operator's sense. High power mode, allowing for more powerful fabric feeding.

Smooth fabric feeding

Feed dog is directly driven by a stepping motor, so operator feels fabric going very smooth as if it is being sucked in. The previous model, the S7300A, was well-received for reducing operator stress.



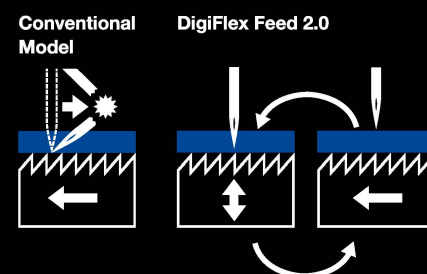
Stitch Quality Improvement

Beautiful stitches without puckering, DIGIFLEX FEED 2.0 achieves appropriate thread tightening for the fabric



Reduce Needle Breakage

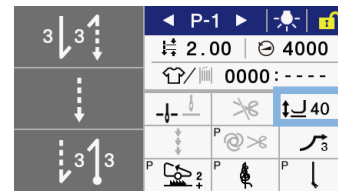
By controlling the feed motion, optimize the timing of the fabric feed. The fabric can be feed at the right timing to prevent needle breakage even when sewing thick fabrics. The response of the reverse stitch is also faster, reducing needle breakage.



Comfortable Workability

Digital presser foot lifting (-9xx Spec)

A stepping motor has been adopted for the presser foot lifting mechanism, making it quieter. This reduces stress for the worker and creates a more comfortable working environment. In addition, a digital knee lifting function has been installed, making the knee lifting motion lighter. This significantly reduces the burden on the worker, making them less tired even after long hours of work, helping to improve productivity.



Large Handling Space

Even large pieces of fabric can be handled without stress, it helps to reduce operators stress.



Easy reverse sewing operation with hand switch instead of reverse lever

Easier reverse sewing operation with the handy switch previously it was done with the reverse lever. The switches are located within operators grasp, the operator can perform the operation without slowing down.



Productivity Improvement by Improving Production Management with IoT

Brother's IoT NEXIO SYSTEM

- Visualize and analyze production data, and solve problems in real time.
- Digitalize manual tasks such as data acquisition and report creation.



Product

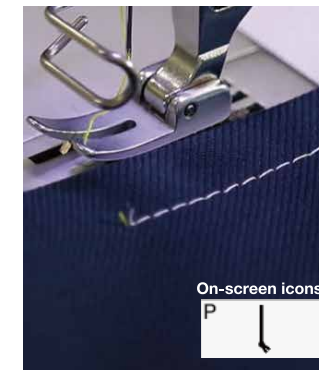


PC . Tablet

Sewing Performance

Bird's nest Reduction & Short Trimming

The 7300B also features the short thread remaining function that was well received on the 7300A. Also features an improved bird's nest reduction function that makes it easier to use. These thread technologies reduce the amount of thread treatment work after sewing, improving productivity and reducing the burden on workers.



High Adaptability for material

New rotary hook is developed, sewing a wide range of material from light to heavy. Reduces adjustment frequency, making it ideal for small-lot, high-mix product production.



A newly developed hook installed in the S-7300B.

Light materials	Medium materials	Heavy materials
Conventional Model		
S-7300A		
S-7300B		
Light materials spec.	Medium materials spec.	Heavy materials spec.

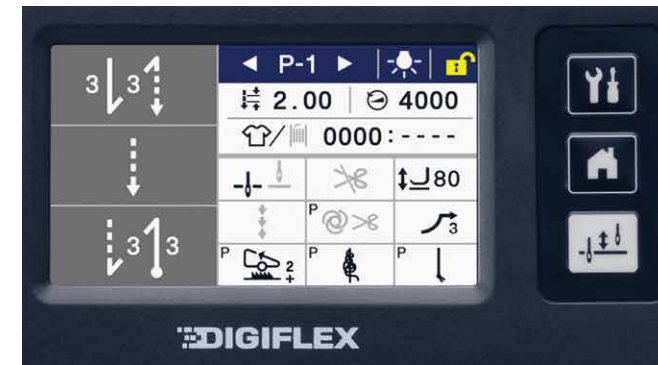
Easy Operation

User-intuitive Color LCD with Touch Panel

Equipped the Color LCD with touch panel and indicates display items with illustration icons, offering user-intuitive operation. For panel display, easy home mode (for operators) and detailed home mode (for supervisor) are available. Each mode is highlighting the necessary and useful functions according to the users so they can grasp the needed information at a glance, switching those modes can be set on the panel.

Detailed home mode (for supervisor)

Detailed settings can be made according to sewing conditions.



Easy home mode (for operator)

Can be customized to meet the operator's needs. Limiting the items used prevents malfunctions.



Clogging at cross-over seam reduction (Options)

Thickness sensor set <SD0637001>

Automatic material thickness sensor detects the thickness while sewing, helping to reduce clogging at cross-over seam and needle breakage, S-7300B enables to correct stitch length automatically, when sensor has been detected cross-over seam, offering stable stitch length and high quality sewing for even unskilled-operator. (Patent applied)

